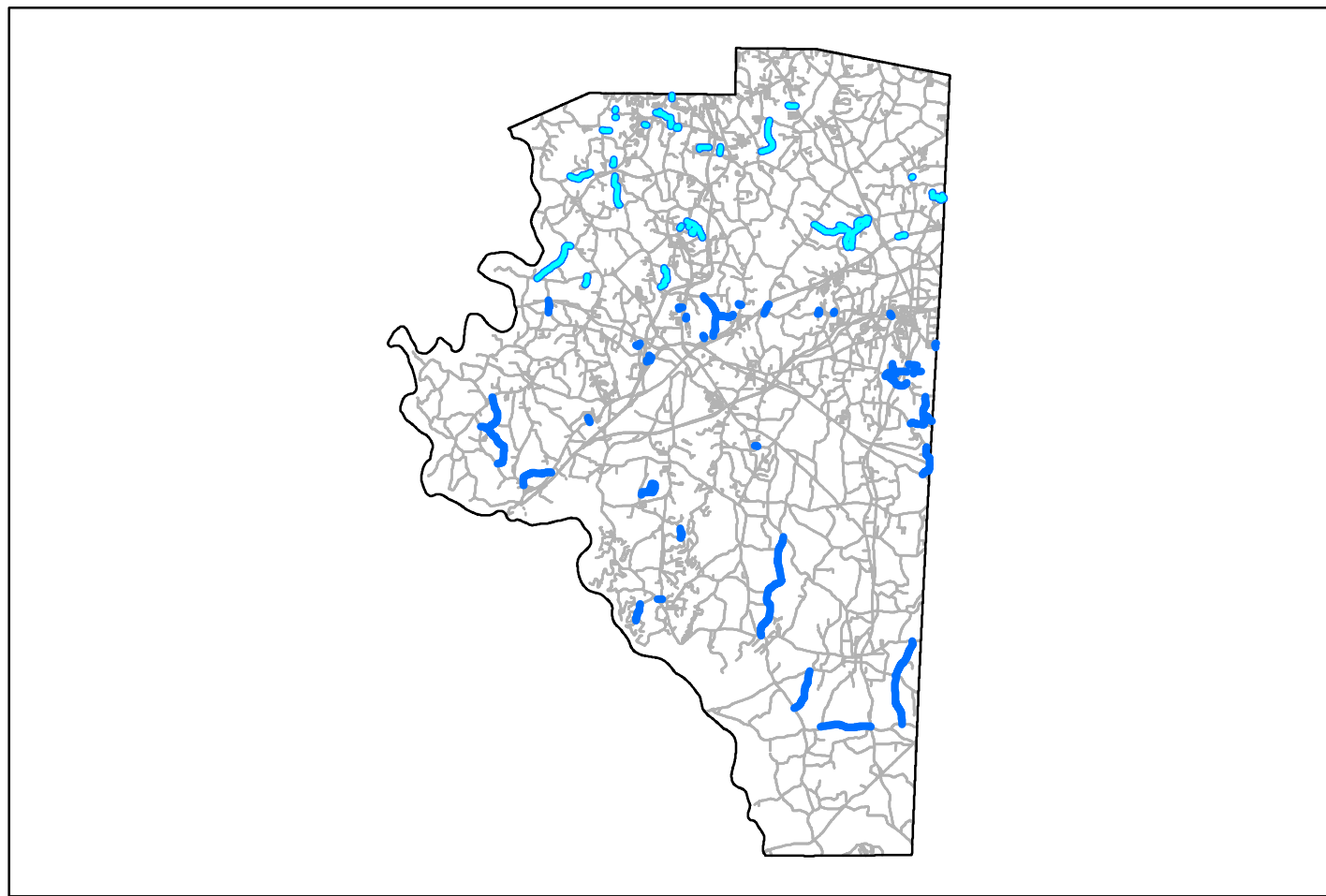


CONTRACT #D100088
DAVIDSON COUNTY

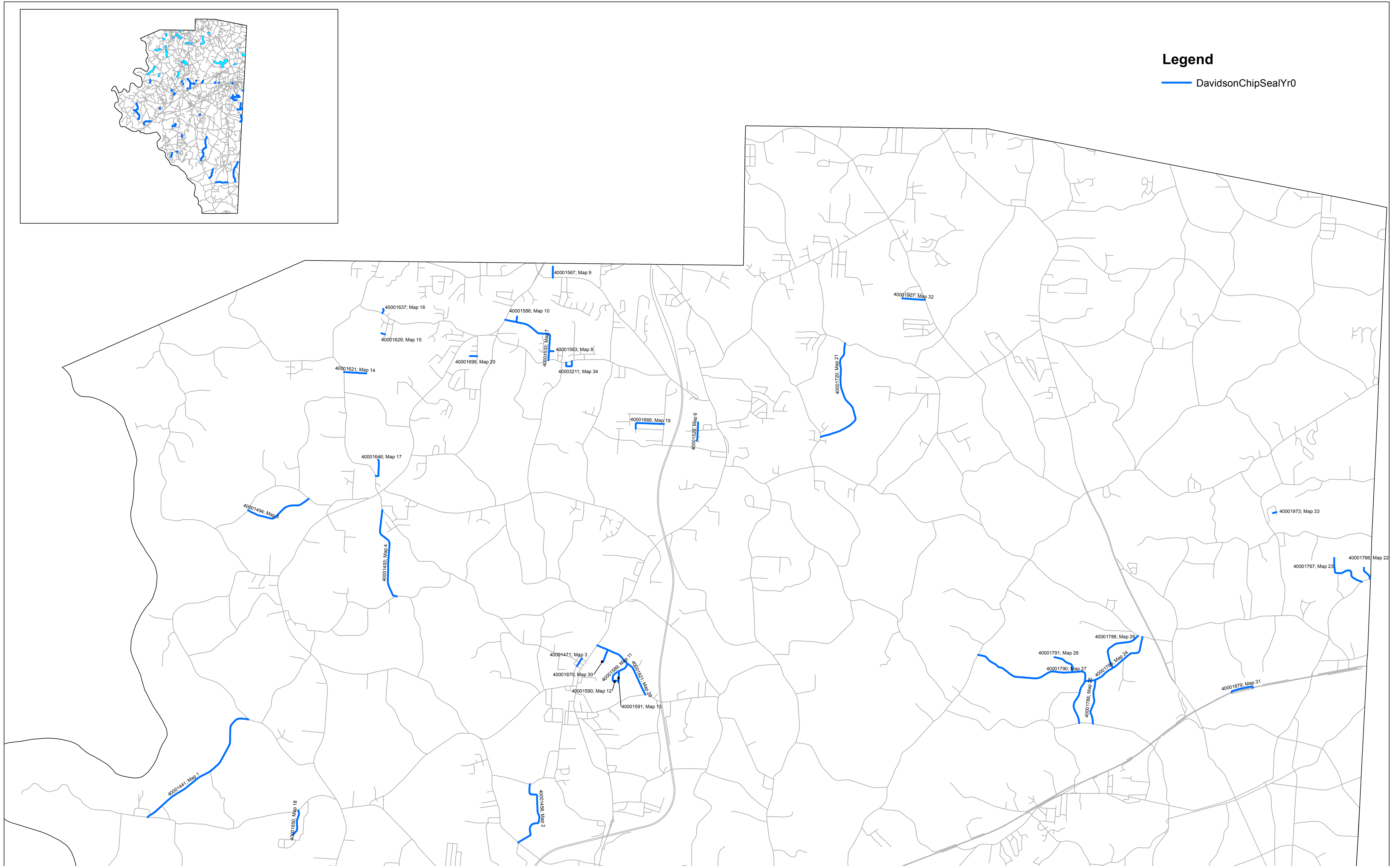
Project No	County	Map No	Route	Description	Lanes	Length MI	Width FT	Asphalt Surface Treatment, Split Seal SY	Emulsion GAL
	Davidson	1	SR 1441- Friendship Church Road	From SR 1194 (Yadkin College Road) To SR 1445 (Old Mill Road)	2	2.245	18	23,707	13,039
		2	SR 1458- Black Dairy Road	From SR 1457 (Arnold Road) To SR 1460 (Will Lanier Road)	2	1.151	18	12,155	6,685
		3	SR 1471- First Street	From SR 1470 (Welcome Street) To SR 1470 (Maple Street)	2	0.135	16	1,267	697
		4	SR 1493- Frye Bridge Road	From SR 1481 (Welcome-Arcadia Road) To SR 3289 (Reedy Creek Road)	2	1.35	18	14,256	7,841
		5	SR 1494- Joe Hege Road	From SR 1495 (Muddy Creek Road) To SR 1495 (Muddy Creek)	2	1.03	20	12,085	6,647
		6	SR 1529- Woods Lane	From Dead End To SR 1663 (Lake Drive)	2	0.277	20	3,250	1,788
		7	SR 1533- Leonard-Berrier Road	From NC 150 To SR 1511 (Hartman Road)	2	1.13	20	13,259	7,292
		8	SR 1567- Fox Lane	From SR 1533 (Leonard-Berrier Road) To Knouse Drive	2	0.066	20	774	426
		9	SR 1567- Lake Road	From SR 1508 (Hickory Tree Road) To Dead End	2	0.166	20	1,948	1,071
		10	SR 1586- Hillwood Court	From SR 1533 (Leonard-Berrier Road) To Dead End	2	0.084	20	986	542
		11	SR 1589- Stephanie Drive	From SR 1821 (Bethesda Road) To SR 1590 (Jackson Street)	2	0.44	20	5,163	2,839
		12	SR 1590- Jackson Street	From SR 1589 (Stephanie Drive) To SR 1591 (Richmond Drive)	2	0.02	20	235	129
		13	SR 1591- Richmond Drive	From SR 1590 (Jackson Street) To SR 1589 (Stephanie Drive)	2	0.15	20	1,760	968
		14	SR 1621- Franklin Lane	From SR 1520 (Central Road) To Dead End	2	0.33	20	3,872	2,130
		15	SR 1629- Saint John's Court	From SR 1619 (Longmeadow Drive) To Dead End	2	0.058	20	681	374
		16	SR 1637- Bancroft Court	From SR 1520 (Central Road) To Dead End	2	0.072	20	845	465
		17	SR 1646- Tamworth Drive	From SR 1493 (Frye Bridge Road) To Dead End	2	0.285	20	3,344	1,839
		18	SR 1650- Westgate Court	From SR 1435 (Becky Hill Road) To Dead End	2	0.391	20	4,588	2,523
		19	SR 1666- Crescent Court	From SR 1665 (Fieldstone Drive) To SR 1507 (David Smith Road)	2	0.500	20	5,867	3,227
		20	SR 1699- Rhyne Court	From SR 1696 (Scottsdale Lane) To Dead End	2	0.109	18	1,151	633
		21	SR 1720- Spry Road	From SR 1716 (Old Thomasville Road) To SR 1715 (Norman Shoaf Road)	2	1.804	20	21,167	11,642
		22	SR 1766- Sunset Drive	From NC 68 To End of Maintenance	2	0.203	16	1,905	1,048
		23	SR 1767- Donvic Drive	From NC 68 To Dead End	2	0.716	16	6,721	3,696
		24	SR 1785- Whitehart School Road	From SR 1800 (Midway School Road) To SR 1792 (Jacob Street)	2	1.9	18	20,064	11,035
		25	SR 1786- Bonnie Regan Road	From SR 1785 (Whitehart School Road) To SR 1792 (Jacob Street)	2	0.68	20	7,979	4,388
		26	SR 1788- Rich Hilton Road	From SR 1800 (Midway School Road) To SR 1785 (Whitehart School Road)	2	0.78	20	9,152	5,034
		27	SR 1790- Ball Road	From SR 1798 (Old Greensboro Road) To SR 1785 (Whitehart School Road)	2	1.52	18	16,051	8,828
		28	SR 1791- Darr Lane	From SR 1790 (Ball Road) To Dead End	2	0.4	20	4,693	2,581
		29	SR 1821- Hinkle Lane	From SR 3010 (Old NC 8) To SR 1464 (Homer Leonard Road)	2	1.07	18	11,299	6,215
		30	SR 1870- Wilson Street	From SR 1821 (Bethesda Road) To Dead End	2	0.27	20	3,168	1,742
		31	SR 1879- North Road	From US 29 To US 29	2	0.350	16	3,285	1,807
		32	SR 1907- Kings Lane	From SR 1700 (Friendship-Ledford Road) to SR 1908 (N. Davidson Drive)	2	0.341	20	4,001	2,201
		33	SR 1973- Willow Court	From SR 1972 (Cub Drive) To Dead End	2	0.053	20	622	342
		34	SR 3211- Wilmar Circle	From SR 1511 (Hartman Road) To SR 1511 (Hartman Road)	2	0.21	20	2,464	1,355
		35	SR 1151- Haden Grove Church Road	From NC 150 To SR 1138 (Old US 29-70 South)	2	1.72	20	20,181	11,100
		36	SR 1158- Wilson Road	From NC 150 To NC 150	2	2.38	18	25,133	13,823
		37	SR 1159- Rickard Rd	From SR 1158 (Wilson Road) To SR 1161 (Rickard Road)	2	0.492	20	5,773	3,175
		38	SR 1161- Rickard Rd	From SR 1159 (Rickard Road) To NC 150	2	1.173	20	13,763	7,570
		39	SR 1194- Yadkin College Road	From SR 1192 (Old US 64) To US 64	2	0.563	16	5,285	2,907
		40	SR 1236- Ashland Drive	From SR 1192 (Old US 64) To Dead End	2	0.200	18	2,112	1,162
		41	SR 1343- Clover Dale Road	From SR 1270 (Summitt Drive) To End of Maintenance	2	0.227	20	2,663	1,465
		42	SR 1363- Pineland Avenue	From SR 1364 (Burbank Drive) To SR 1147 (Old Salisbury Road)	2	0.227	18	2,397	1,318
		43	SR 1371- Green Meadow Drive	From SR 1370 (Peacock Drive) To SR 1371 (Green Meadow Drive)	2	1.499	20	17,588	9,674
		44	SR 1380- Iroquois Trail	From SR 1231 (Happy Hill Road) To Dead End	2	0.283	20	3,321	1,826
		45	SR 1418- Sycamore Road	From SR 1417 (Leonard Road) To Dead End	2	0.191	16	1,793	986
		46	SR 1419- Michael Street	From SR 1418 (Sycamore Road) To SR 1531 (Robertson Street)	2	0.078	16	732	403
		47	SR 1798- Old Greensboro Road	From SR 2123 (National Highway) To US 29	2	0.491	18	5,185	2,852
		48	SR 1842- Hill Everhart Road	From SR 1843 (Pilgrim United Church Road) To SR 1841 (City Lake Road)	2	2.05	18	21,648	11,906
		49	SR 1843- Pilgrim United Church Rd	From SR 1841 (City Lake Road) To SR 1842 (Hill Everhart Road)	2	0.08	18	845	465
		50	SR 1994- Tussey Avenue	From SR 1844 (Greensboro Street) To Dead End	2	0.152	16	1,427	785
		51	SR 2093- Ben Lee Road	From NC 109 To SR 2066 (Kennedy Road)	2	0.17	20	1,995	1,097
		52	SR 2094- Lee Road	From NC 109 To SR 2066 (Kennedy Road)	2	0.54	20	6,336	3,485
		53	SR 2095- Paul's Airport Road	From SR 2066 (Kennedy Road) To Randolph Co. Line	2	1.37	18	14,467	7,957
		54	SR 2096- Buie-Bodenheimer Road	From SR 2097 (Noahstown Road) To SR 2095 (Paul's Airport Road)	2	1.03	20	12,085	6,647
		55	SR 2098- Kindley Road	From SR 2266 (Hannerville Road) To SR 2097 (Hughes Grove Church Road)	2	1.47	20	17,248	9,486
		56	SR 2125- Wayside Drive	From SR 2024 (Upper Lake Road) To Dead End	2	0.085	18	898	494
		57	SR 2195- Angela Drive	From SR 2066 (Kennedy Road) To Dead End	2	0.37	20	4,341	2,388
		58	SR 2196- Kimberly Lane	From SR 2195 (Angela Drive) To SR 2197 (Blythe Drive)	2	0.27	20	3,168	1,742
		59	SR 2197- Blythe Drive	From SR 2803 (Shanda Lane) To Dead End	2	0.31	20	3,637	2,001
		60	SR 2748- Overlook Drive	From SR 2091 (Fuller Mill Road) To SR 2812 (Overlook Heights)	2	0.213	20	2,499	1,375
		61	SR 2751- Greentree Road	From SR 2094 (Lee Road) To Dead End	2	0.222	20	2,605	1,433
		62	SR 2772- Jarrett Road	From Dead End To Dead End	2	0.136	18	1,436	790
		63	SR 2802- Kirk Street	From SR 2093 (Ben Lee Road) To SR 2813 (Stacey Lane)	2	0.49	20	5,749	3,162
		64	SR 2803- Shanda Lane	From SR 2197 (Blythe Drive) To Dead End	2	0.16	20	1,877	1,033
		65	SR 2851- Trenton Lane	From SR 2093 (Ben Lee Road) To Dead End	2	0.46	18	4,858	2,672
		66	SR 2976- White Street Ext.	From SR 1848 (Meadow Drive) To End of Maintenance	2	0.106	18	1,119	616
		67	SR 3009- Pilgrim Court	From SR 1813 (Ridge Road) To Dead End	2	0.176	20	2,065	1,136
		68	SR 3316- Jala Lane	From SR 3315 (Lorven Drive) To Dead End	2	0.145	20	1,701	936
		69	SR 1106- Beckner Road	From SR 1105 (Riverwood Road) To SR 3108 (Ervin Drive)	2	0.798	20	9,363	5,150
		70	SR 1349- Wall Road	From NC 8 To SR 1396 (Linwood-Southmont Road)	2	0.209	16	1,962	1,079
		71	SR 2471- Hillview Drive	From SR 2282 (Warf Road) To Dead End	2	0.468	20	5,491	3,020
		72	SR 2504- Hunt Road	From NC 8 To SR 1002 (Denton Road)	2	1.92	20	22,528	12,390
		73	SR 2517- Sexton Road	From NC 47 To SR 1001 (Farmer Road)	2	1.76	20	20,651	11,358
		74	SR 2519- Piedmont School Road	From NC 47 To SR 2519 (Piedmont School Road)	2	2.23	20	26,165	14,391
		75	SR 2522- Handy Road	From NC 109 To SR 2501 (S. Main Street Ext.)	2	2.28	22	29,427	16,185
Total for Project No.						49.480		557,282	306,505
Grand Total						49.480		557,282	306,505

Davidson County Chip Seal Yr 0- Part 1



Legend

— DavidsonChipSealYr0

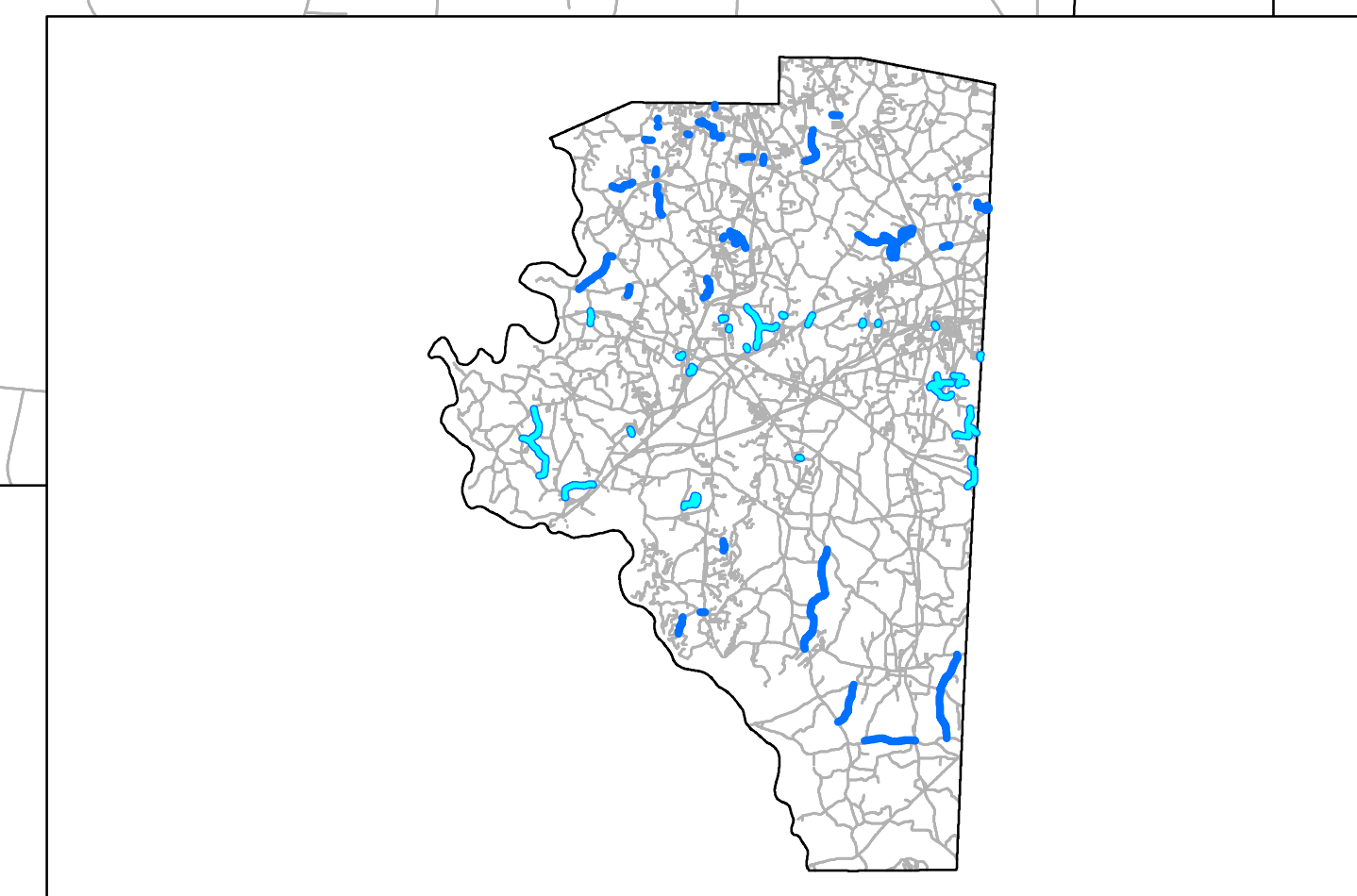


Davidson County Chip Seal Yr 0- Part 2



Legend

— DavidsonChipSealYr0



Davidson County Chip Seal Yr 0- Part 3



Legend

— DavidsonChipSealYr0